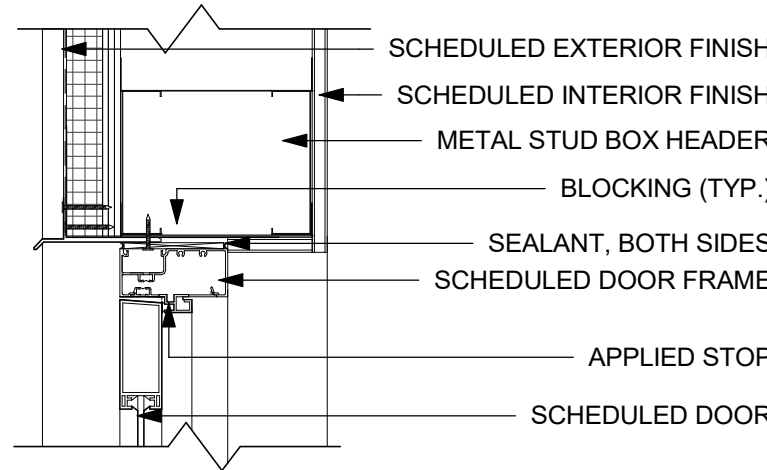
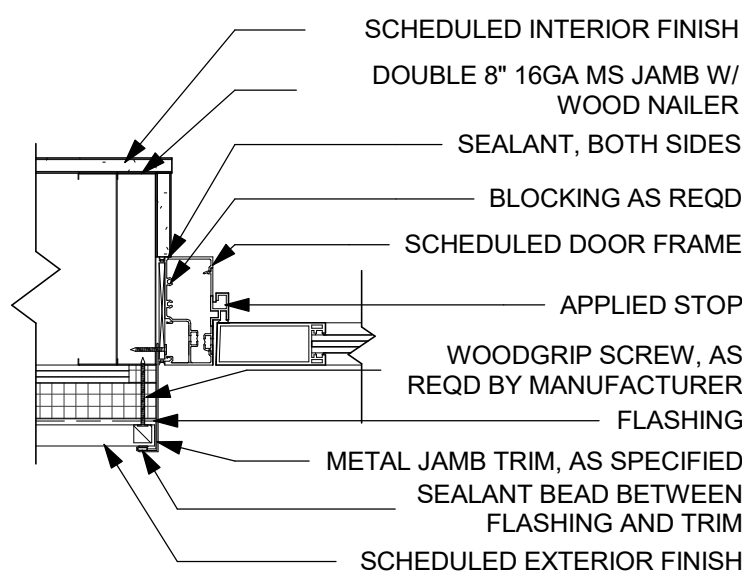


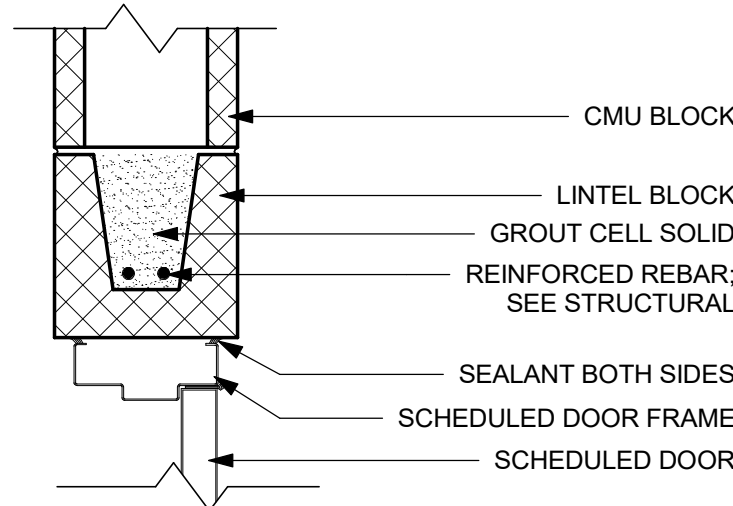
1A STOREFRONT DOOR THRESHOLD DETAIL (EXTERIOR) TYP.
1 1/2" = 1'-0"



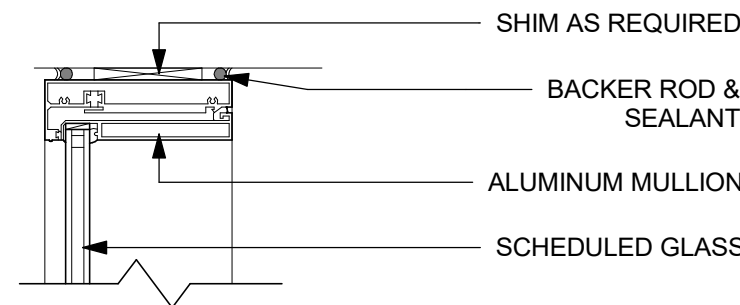
1B STOREFRONT DOOR HEAD DETAIL (EXTERIOR) TYP.
1 1/2" = 1'-0"



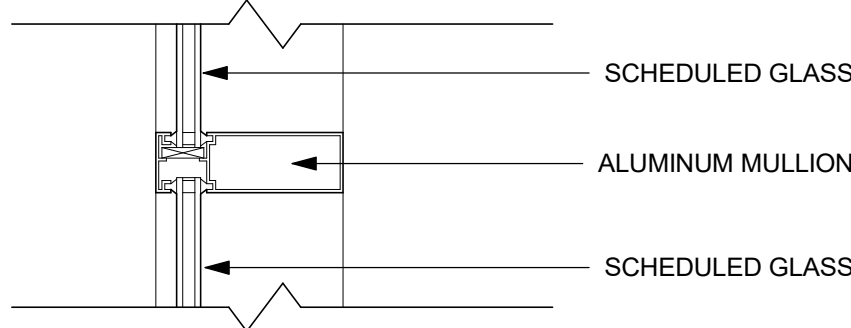
1C STOREFRONT DOOR JAMB DETAIL (EXTERIOR) TYP.
1 1/2" = 1'-0"



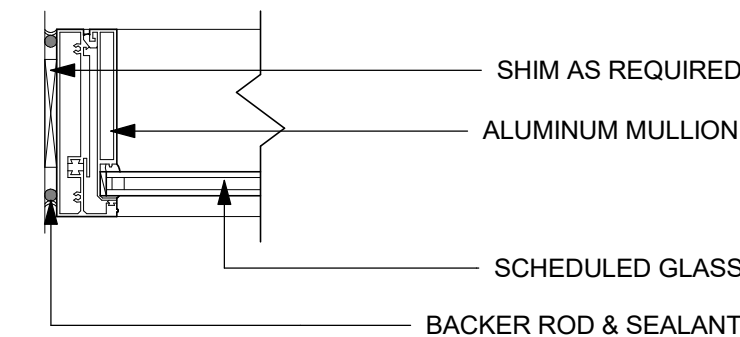
2 HOLLOW METAL DOOR JAMB DETAIL @ 8" CMU WALL TYP.
1 1/2" = 1'-0"



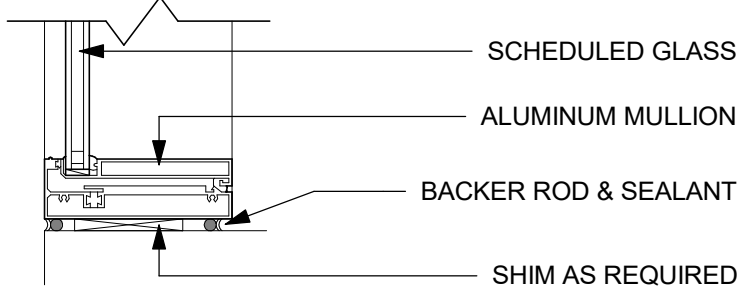
3A STOREFRONT MULLION HEAD DETAIL (EXTERIOR) TYP.
1 1/2" = 1'-0"



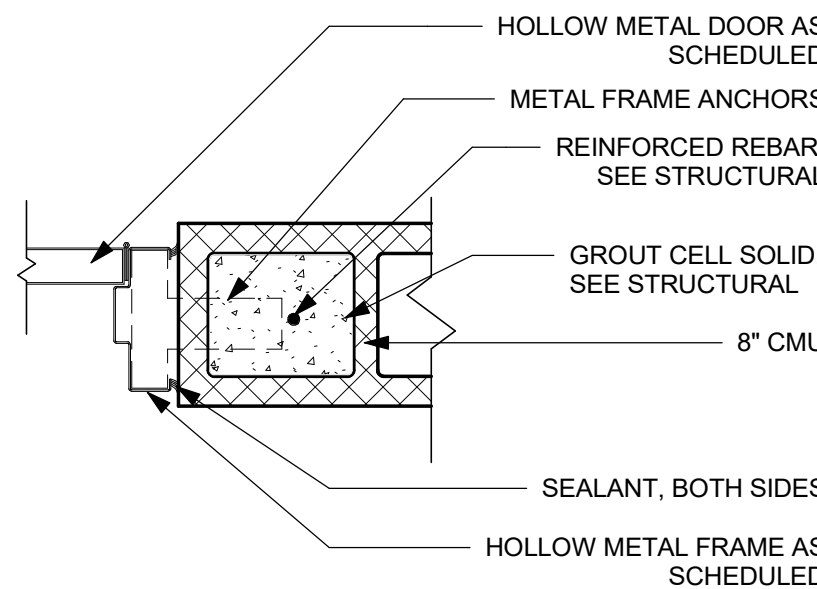
3B STOREFRONT MULLION HORIZONTAL DETAIL (EXTERIOR) TYP.
1 1/2" = 1'-0"



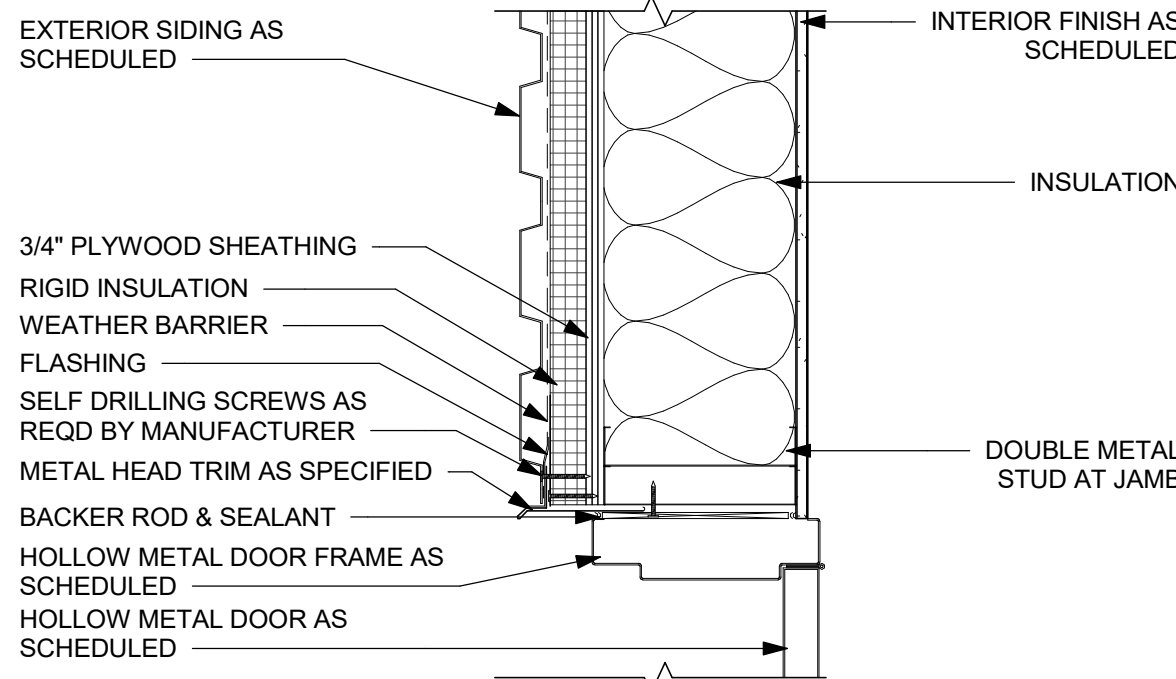
3C STOREFRONT MULLION JAMB DETAIL (EXTERIOR) TYP.
1 1/2" = 1'-0"



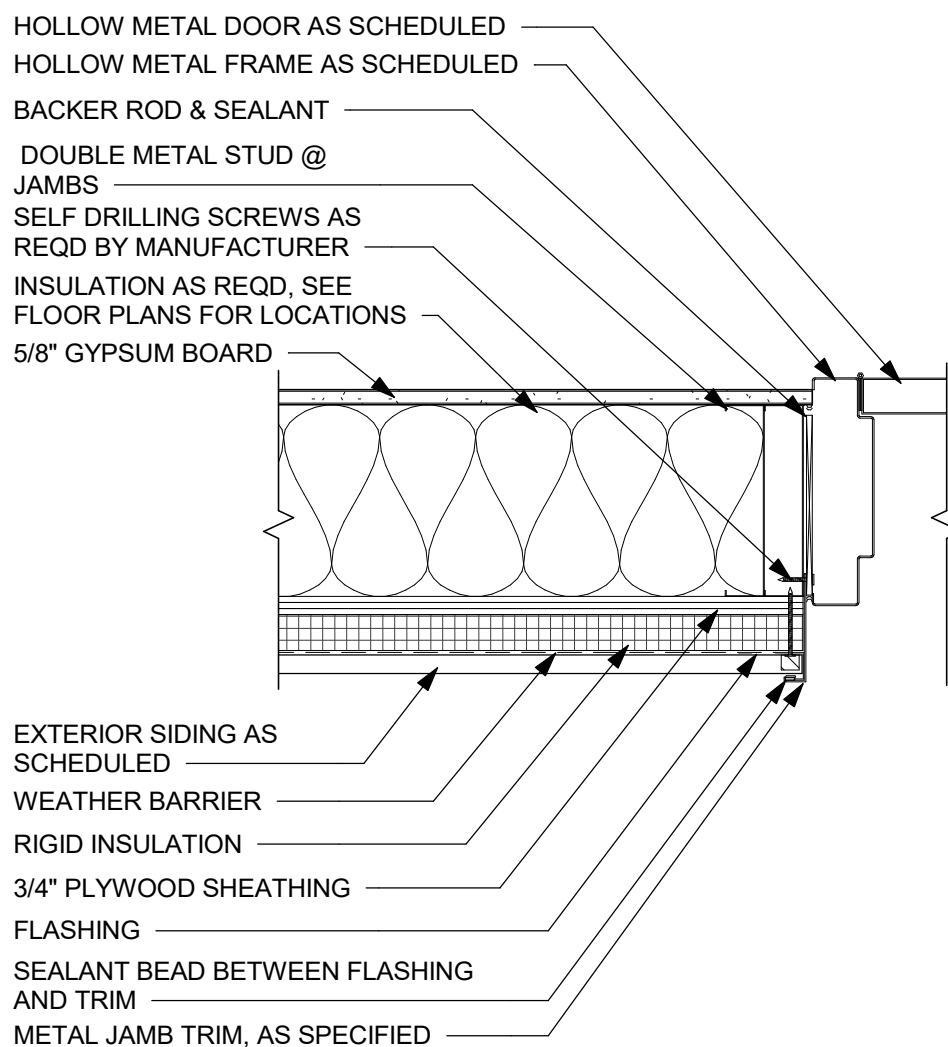
3D STOREFRONT MULLION SILL DETAIL (EXTERIOR) TYP.
1 1/2" = 1'-0"



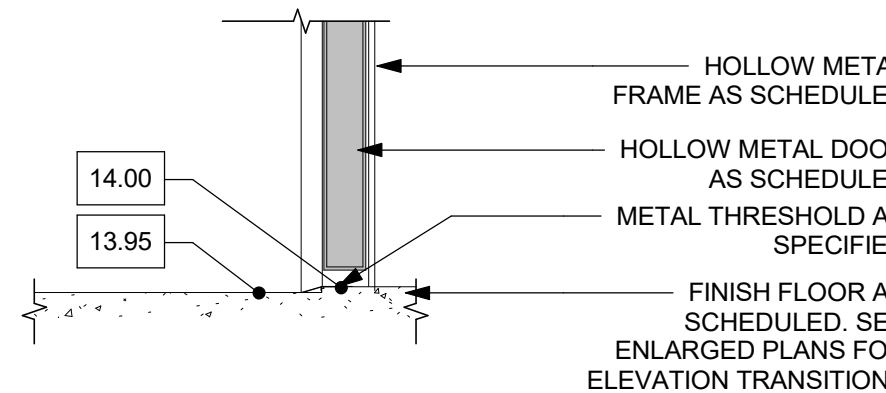
4 ANCHORED DOOR JAMB DETAIL @ 8" CMU WALL TYP.
1 1/2" = 1'-0"



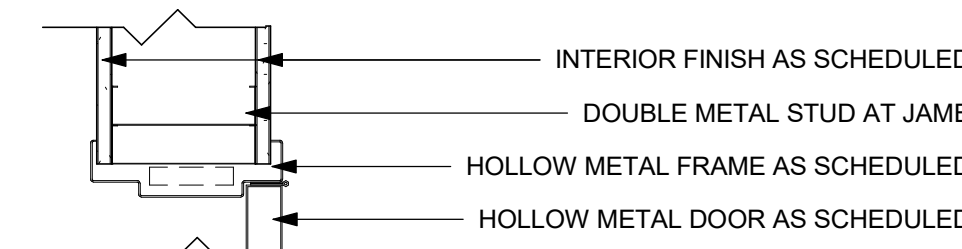
5A HOLLOW METAL DOOR HEAD DETAIL (EXTERIOR) TYP.
1 1/2" = 1'-0"



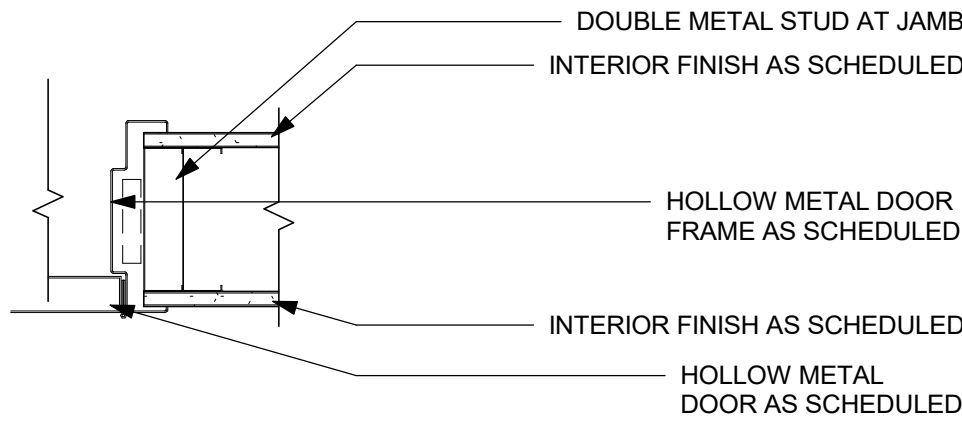
5B HOLLOW METAL DOOR JAMB DETAIL (EXTERIOR) TYP.
1 1/2" = 1'-0"



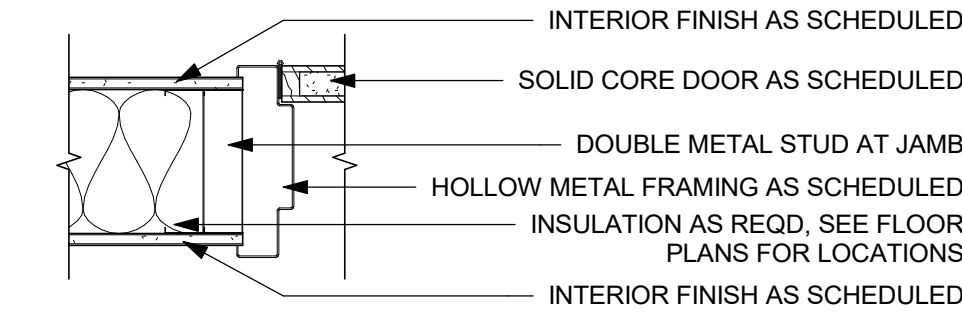
5C HOLLOW METAL DOOR SILL DETAIL (EXTERIOR) TYP.
1 1/2" = 1'-0"



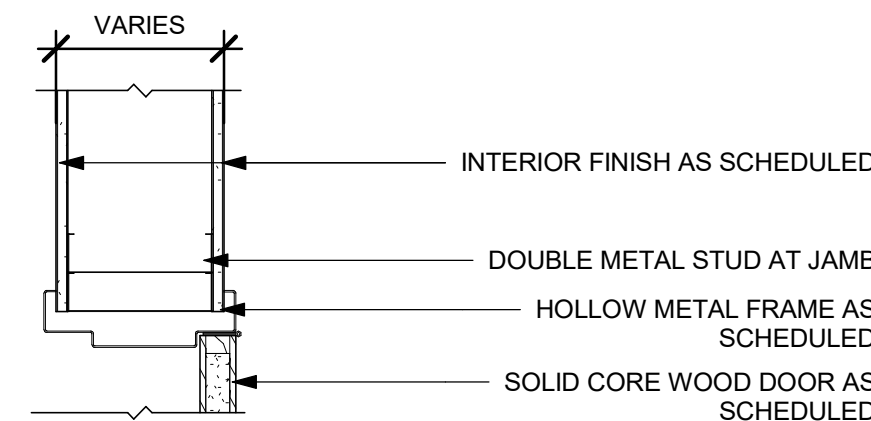
6A HOLLOW METAL DOOR HEAD DETAIL (INTERIOR) TYP.
1 1/2" = 1'-0"



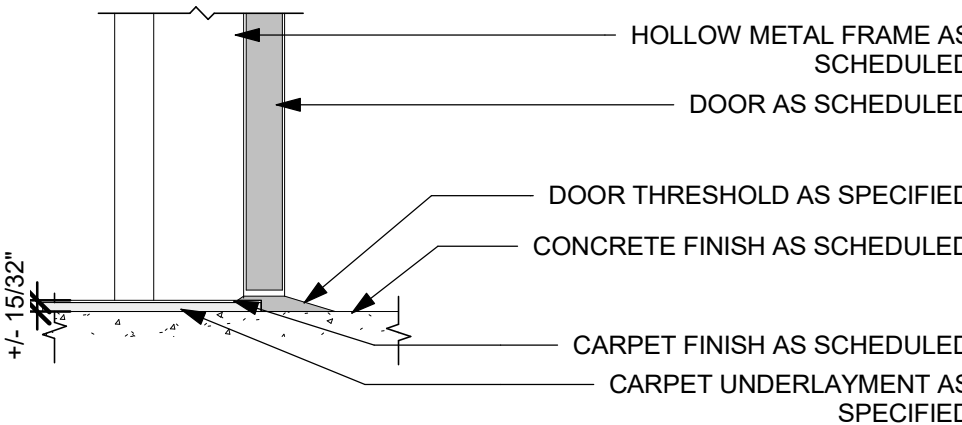
6B HOLLOW METAL DOOR JAMB DETAIL (INTERIOR) TYP.
1 1/2" = 1'-0"



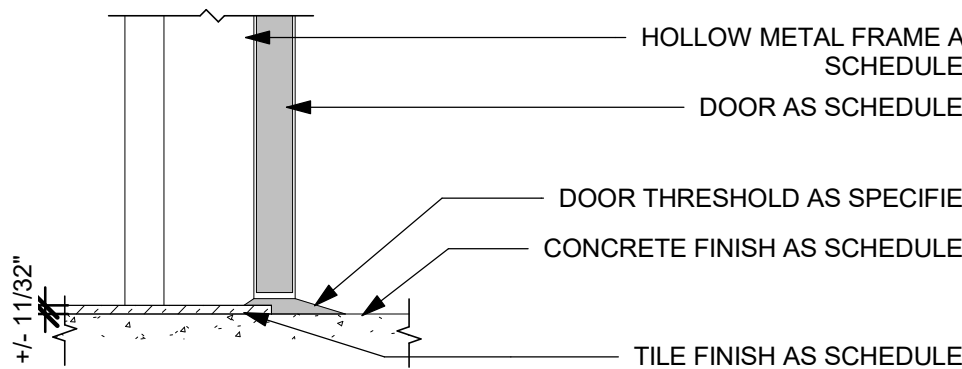
6C SOLID CORE DOOR JAMB DETAIL (INTERIOR) TYP.
1 1/2" = 1'-0"



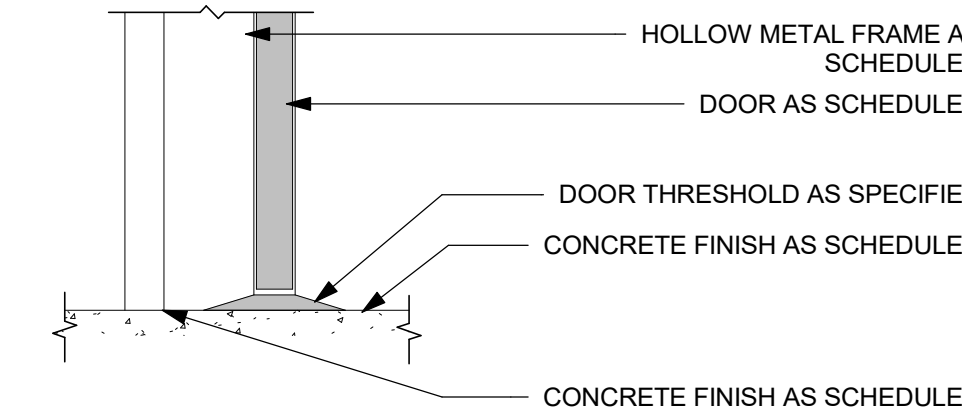
6D SOLID CORE HEAD DETAIL (INTERIOR) TYP.
1 1/2" = 1'-0"



6E HOLLOW METAL DOOR SILL @ CARPET - CONCRETE THRESHOLD TYP.
1 1/2" = 1'-0"



6F HOLLOW METAL DOOR SILL @ TILE - CONCRETE THRESHOLD TYP.
1 1/2" = 1'-0"



6G HOLLOW METAL DOOR SILL @ CONCRETE THRESHOLD TYP.
1 1/2" = 1'-0"

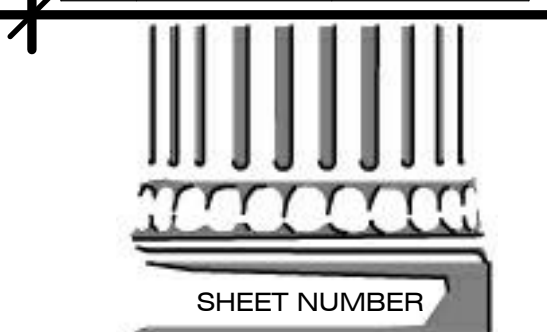


NEW CONSTRUCTION
FORD PRO
FOR
MIKE WILLIS
2010 PATTON ST.

© COPYRIGHT 2026,
RANDY M. GOODLOE, AIA, APAC
ALL INFORMATION, EITHER DRAWN, WRITTEN,
OR IMPLIED APPEARING IN THIS DOCUMENT
SHALL NOT BE DUPLICATED, DISCLOSED, OR
OTHERWISE USED WITHOUT THE WRITTEN
PERMISSION OF THE AUTHOR, RANDY M.
GOODLOE, AIA, APAC. THIS DOCUMENT IS AN
INSTRUMENT OF SERVICE AND IS THE SOLE
PROPERTY OF THE AUTHOR. FURTHERMORE,
THE USE OF THIS DOCUMENT FOR ANY
PURPOSE SHALL BE REVOKED, IF THE INTENT
OF THE DESIGN OR THE CONSTRUCTION
TECHNIQUES OR DETAILS SHOWN HEREIN
ARE NOT ADHERED TO OR THE
CONTRACTUAL AGREEMENT GOVERNING
THEIR USE ARE NOT STRICTLY ADHERED TO.

PROJECT NO.
25012
PROJECT MANAGER
TM
DATE ISSUED
2026.05.22

REVISED



SHEET NUMBER
A-250
HEAD, JAMB, & SILL
DETAILS